

New Faculty Talks

Research Interests, Activities,
& Reflections

May 19, 2020
12:00 – 1:00 PM

Panel Held Last Friday, May 15:

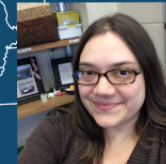
- Mónica González Ybarra, C&I
- Lydia Kyuri, EPSY
- Giselle Martinez-Negrette, C&I

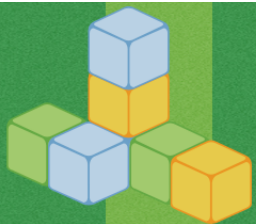
Today's Panel:

- Jessica Hardy, SPED
- Nidia Ruedas-Gracia, EPSY
- Nigel Bosch, EPSY and iSchool

Slides and videos from both sessions
will be posted on the BER internal web pages

Jessica K. Hardy * Assistant Professor * Special Education





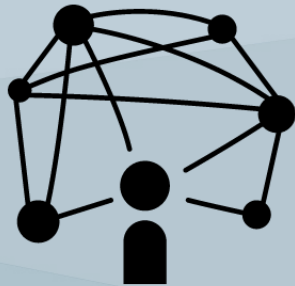
Teaching Math to Preschoolers with Disabilities

Progressing My *Research* Agenda





Coaching as a Professional Development Strategy for Early Childhood Teachers



Collaborate



Write



Research



Dra. Nidia Ruedas-Gracia

Assistant Professor

Gracia Lab

Educational Psychology

BER New Faculty Panel
May 19th, 2020



1

explore *sociocultural factors* that impact academic performance and psychological wellbeing among culturally diverse students

2

inform and develop culturally-sustaining interventions for minoritized students



nrgracia@illinois.edu

@nrgracia

Sense of Belonging

Cultural
Nature of
Belonging



- Context-dependent
 - REC-B project (in prep)
- Developmental
 - BILLs (data collection)
- Cultural Protective Factors
 - EICM (under review)

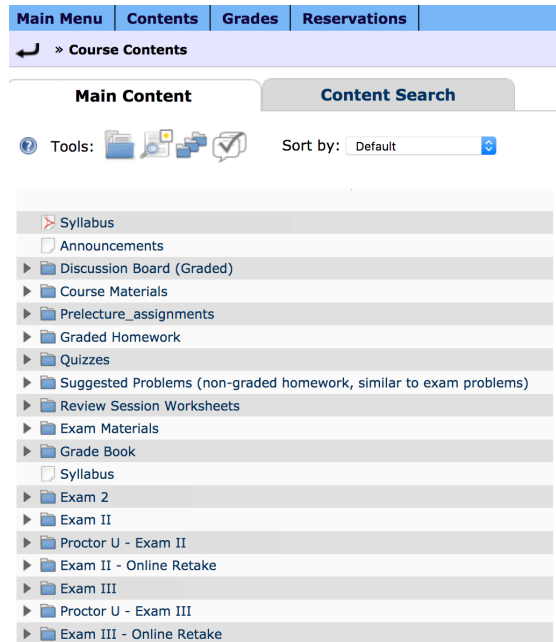


nrgracia@illinois.edu

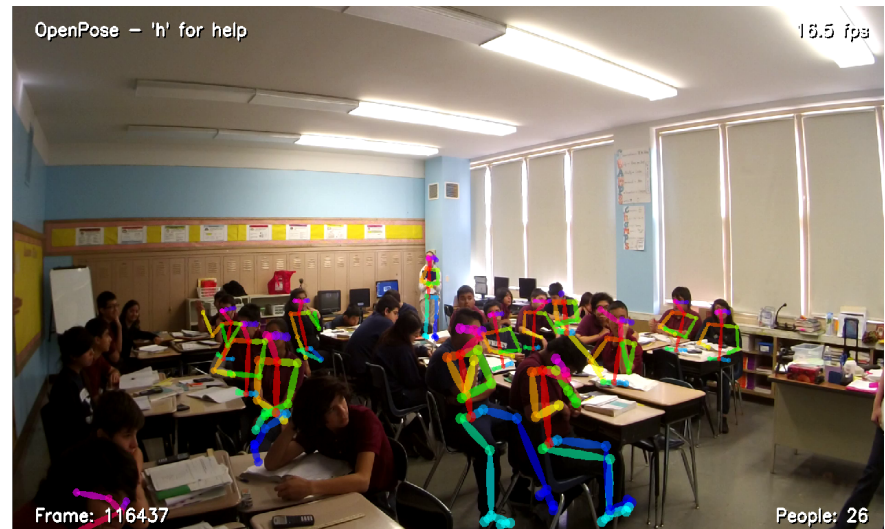
@nrgracia

Nigel Bosch – Current Projects

Underrepresented Student Learning in Online Introductory STEM College Courses (IES)

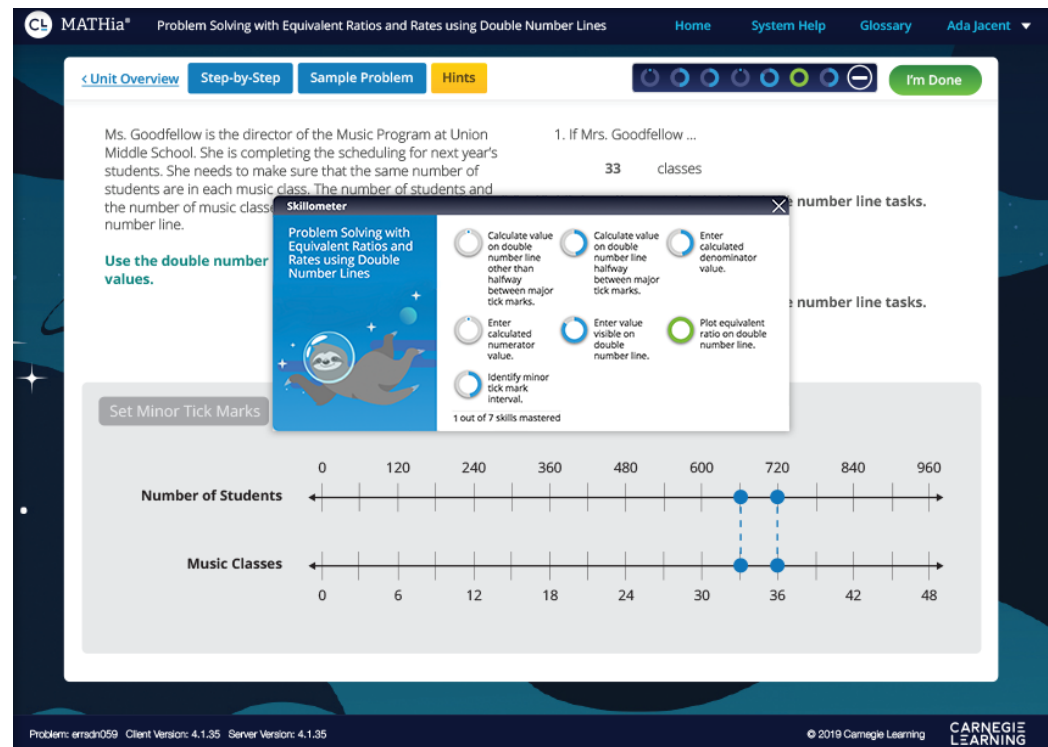


Advancing Computational Grounded Theory for Audiovisual Data from STEM Classrooms (NSF)



Nigel Bosch – Future Projects

- Investigating algorithmic bias in educational software
- Smarter automatic interventions in educational software through model interpretation



Comments and Questions for the Panelists

- Based on postings in Chat, we will invite audience members to unmute and share

- Thank you for joining us!
- Panel Events 1 and 2: Slides and video will be posted soon
- COE COVID-19 Seed Funding Program
Visit: keepresearching.education.illinois.edu
Next Submission Target Date: June 2, 2020